

# **INFLUENZA A (H1N1) OUTBREAK - CURRENT SITUATIONS**

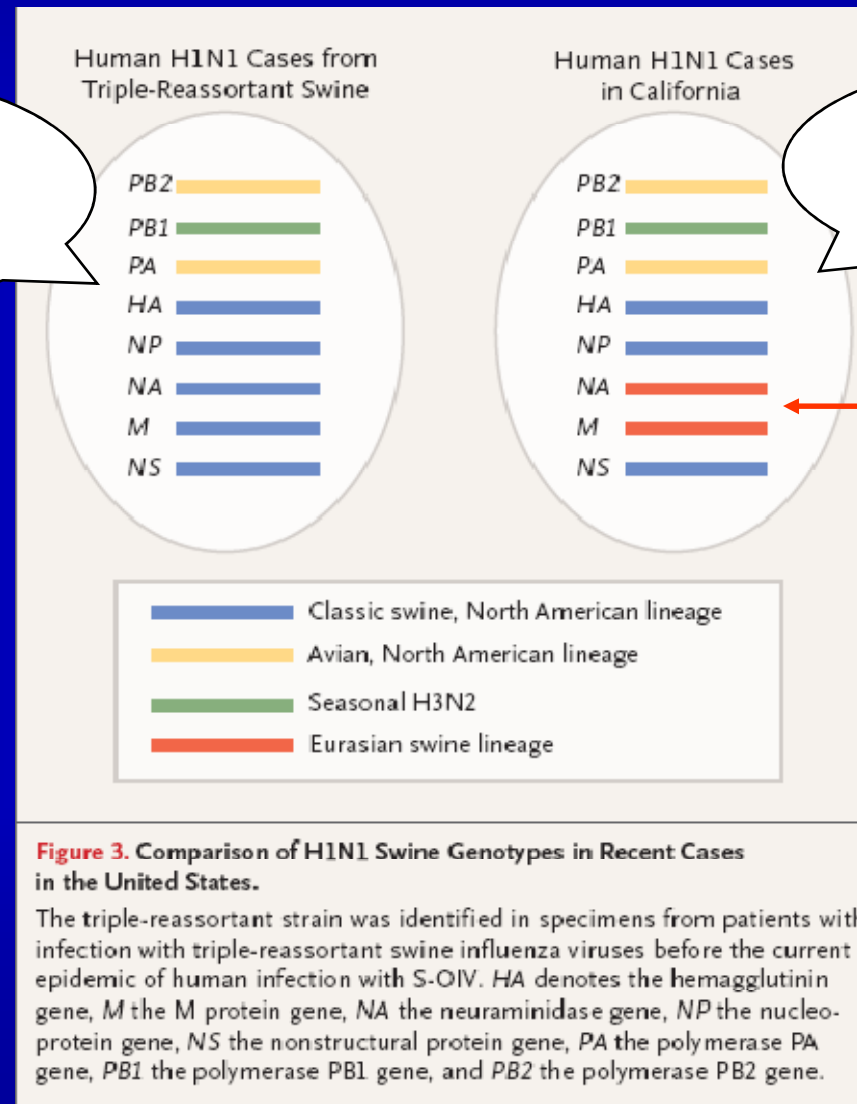
**Disease Control Division  
Ministry of Health**



**Ministry of Health Malaysia**

# Influenza A(H1N1) "Biomolecular Tracking"

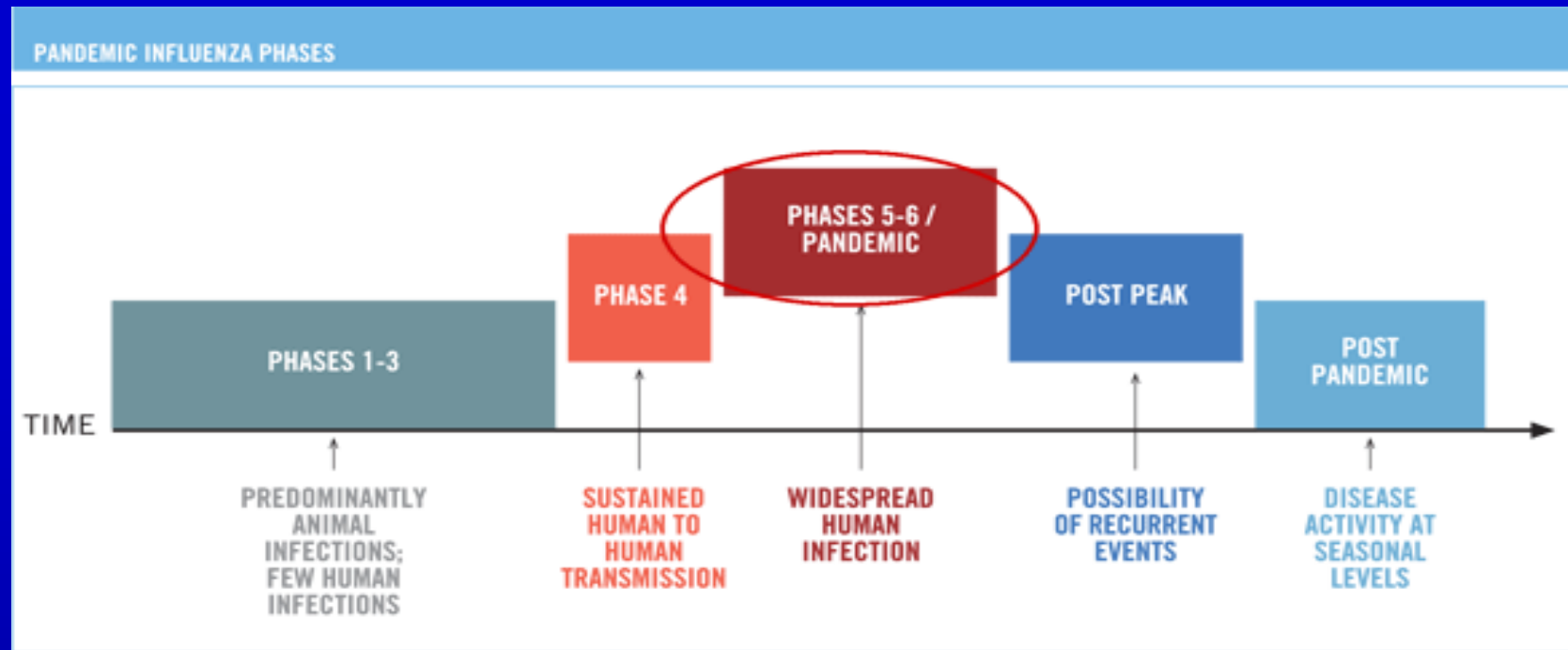
Detected in USA since 1998 in swine.  
Between 2005-2009, 12 cases human infection



Virus causing present AH1N1 outbreak, with 2 genes (N & MA) from Eurasian swine.



# Pandemic Phase 5



Is characterized by human-to-human spread of the virus into at least two countries in one WHO region.

Pandemic Phase 5 – since 29 April 2009.  
IHR Emergency Committee Meeting convened on 8 June 2009  
decided that the pandemic phase remain as Phase 5



# Current Situation



# Global Situation

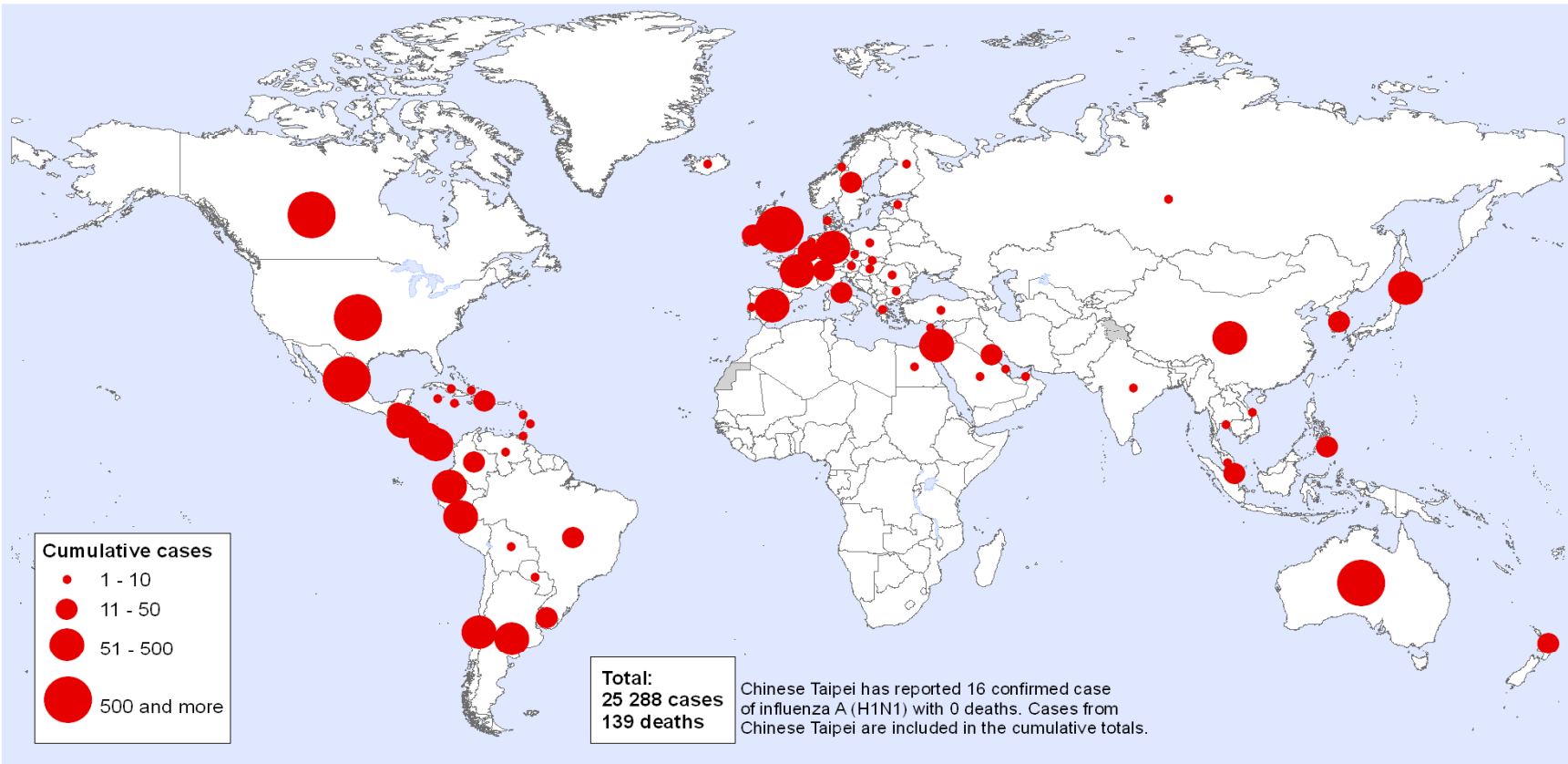
- **Till 10 June 2009 @ 8.00 am;**
  - **73 countries reported confirmed cases**
  - **25,586 confirmed cases with 139 deaths**
  - **Latest countries reported cases – Cayman Islands, Dominica, Trinidad & Tobago and United Arab Emirates**



# Global Situation (till 8 June 09, 6.00GMT)

New Influenza A (H1N1),  
Number of laboratory confirmed cases as reported to WHO

Status as of 08 June 2009  
06:00 GMT



The boundaries and names shown and the designations used on this map do not imply the expression of any opinion whatsoever on the part of the World Health Organization concerning the legal status of any country, territory, city or area or of its authorities, or concerning the delimitation of its frontiers or boundaries. Dotted lines on maps represent approximate border lines for which there may not yet be full agreement.

Map produced: 08 June 2009 06:30 GMT

Data Source: World Health Organization  
Map Production: Public Health Information  
and Geographic Information Systems (GIS)  
World Health Organization



© WHO 2009. All rights reserved



Ministry of Health Malaysia

# Global Situation (till 10 June 2009 @ 8.00am)

Confirmed Cases Influenza A (H1N1) Wednesday June 10 2009; 8 am							
Country		June 5	June 6	June 7	June 8	June 9	June 10
		8 am	8 am	8 am	8 am	8 am	8 am
1	Argentina	131	147	147	147	202	202
2	Australia	876	1006	1020	1051	1211	1224
3	Austria	2	2	2	2	5	5
4	Bahamas	1	1	1	1	1	1
5	Bahrain	1	1	1	1	1	1
6	Barbados		1	1	1	2	2
7	Belgium	13	13	13	13	14	14
8	Bolivia	3	3	3	3	3	3
9	Brazil	20	28	28	28	35	35
10	Bulgaria	1	1	1	1	2	2
11	Canada	1530 (2)	1795 (3)	1795 (3)	1795 (3)	2115 (3)	2115 (3)
12	Cayman Islands					1	1
13	Chile	313	369 (1)	369 (1)	369 (1)	411 (1)	411 (1)
14	China; Mainland	59	67	70	80	82	97
	Hong Kong	30	30	33	38	41	45
	Taiwan	16	16	16	16	16	24
15	Colombia	20	24	24	24	25	25
16	Costa Rica	68 (1)	68 (1)	68 (1)	68 (1)	68 (1)	68 (1)
17	Cuba	4	4	4	4	5	5
18	Cyprus	1	1	1	1	1	1
19	Czech Republic	1	2	2	2	2	2
20	Denmark	1	4	4	4	7	7
21	Dominica					1	1
22	Dominican Republic	11	33	33	33	44 (1)	44 (1)
23	Ecuador	39	43	43	43	60	60
24	Egypt	1	1	1	1	1	1
25	El Salvador	41	49	49	49	69	69
26	Estonia	1	3	3	3	3	3
27	Finland	4	4	4	4	4	4
28	France	42	47	47	47	58	58
29	Germany	37	43	43	43	63	63
30	Greece	5	5	5	5	5	5
31	Guatemala	14	23	23	23	30	30
32	Honduras	2	34	34	34	34	34
33	Hungary	2	3	3	3	3	3
34	Iceland	1	1	1	1	1	1
35	India	1	4	4	4	4	4



# Global Situation (till 10 June 2009 @ 8.00am)

36	Ireland	7	8	8	8	11	11
37	Israel	39	39	39	39	54	54
38	Italy	30	38	38	38	50	50
39	Jamaica	2	2	2	2	4	4
40	Japan	409	410	410	410	432	457
41	Korea	41	41	46	47	48	48
42	Kuwait	18	18	18	18	18	18
43	Lebanon	3	3	3	3	3	3
44	Luxembourg	1	1	1	1	1	1
45	Malaysia	5	6	7	7	7	7
46	Mexico	5029 (97)	5563 (103)	5563 (103)	5563 (103)	5717 (106)	5717 (106)
47	Netherlands	4	4	4	4	10	10
48	New Zealand	11	13	13	14	17	19
49	Nicaragua	1	5	5	5	18	18
50	Norway	4	9	9	9	9	9
51	Panama	155	173	173	173	179	179
52	Paraguay	5	5	5	5	5	5
53	Peru	40	47	47	47	61	61
54	Philippines	29	33	33	33	46	54
55	Poland	4	4	4	4	5	5
56	Portugal	2	2	2	2	2	2
57	Romania	6	8	8	8	9	9
58	Russia	3	3	3	3	3	3
59	Saudi Arabia		1	1	1	1	1
60	Singapore	11	14	14	15	15	17
61	Slovakia	3	3	3	3	3	3
62	Spain	180	218	218	218	291	291
63	Sweden	10	13	13	13	14	14
64	Switzerland	10	10	10	10	16	16
65	Thailand	2	8	8	8	8	8
66	Trinidad and Tobago					2	2
67	Turkey	7	8	8	8	10	10
68	United Arab Emirates					1	1
69	United Kingdom	381	428	428	428	557	557
70	United States of America	10053 (17)	11054 (17)	11054 (17)	11054 (17)	13217 (27)	13217 (27)
71	Uruguay	15	15	15	15	17	17
72	Venezuela	3	4	4	4	4	4
73	Vietnam	3	5	9	9	11	14
Total (No. of Deaths in Bracket)		19818 (117)	22092 (125)	22122 (125)	22171 (125)	25506 (139)	25586 (139)



# Countries with Local Transmission

Countries Reporting Local Transmission Cases of Confirmed Influenza A (H1N1)	
Updated as of June 6, 2009 at 8 am	
Country	Total Human to Human Cases Reported
Australia	** Yes (sustained human-to-human transmission in Victoria State)
Belgium	4
Canada	** Yes
China	1 clustered outbreak
Denmark	1
Estonia	2
France	1
Germany	9
Honduras	1
Ireland	1
Italy	2
Japan	** Yes
Mexico	** Yes
Philippines	1 clustered outbreak
Romania	4
Slovakia	1
South Korea	1; 14 in clustered outbreak
Spain	84
Switzerland	2 clusters
United Kingdom	158
USA	** Yes

*\*\* Yes : Human-to-Human Transmission is established but the exact number is unknown  
Honduras – reported 1<sup>st</sup> case on May 24 and this case had no epidemiologic link*

21 countries



# Countries Reporting Confirmed Influenza A(H1N1)

- Countries with additional / new reported cases within the past 14 days – 52 countries



# Situation in Malaysia

Till 10 June 2009 @ 12.00 midnight

- **Patients Under Investigation admitted into designated hospitals = 554 persons**
  - 9 confirmed cases of influenza A(H1N1)
    - 4 of them Malaysian students in USA, came back home for vacation.
    - 1<sup>st</sup>, 2<sup>nd</sup>, 3<sup>rd</sup>, 6<sup>th</sup> & 8<sup>th</sup> cases travelled by MH091 to KLIA
    - 4<sup>th</sup>, 5<sup>th</sup>, 7<sup>th</sup>, 8<sup>th</sup> & 9<sup>th</sup> cases – Came to SAE for holiday
    - All classified as imported cases



# Situation in Malaysia

Number and Percentage of PCR Result for Cases  
Notified as Suspected A(H1N1) in Malaysia,  
30.04.09 – 09.06.09

PCR Result	Number	Percentage (%)
Flu A (H1N1)	8	1.6
Flu A – H1 (seasonal)	8	1.6
Flu A – H3 (seasonal)	95	18.4
Flu B	2	0.4
Flu A – Not detected	403	77.8
Total	516	



# **Actions Taken by Ministry of Health**

- **Continue all preventive & control measures**
  - **Activation of Operations Room**
  - **Enhance surveillance at all levels of health facilities**
  - **28 designated hospitals ready to receive cases (168 rooms with negative pressure)**
  - **All Clinical Specimens to IMR (BSL3)**
  - **Screening at POE**
  - **Case notification & investigation**
  - **Quarantine contacts of confirmed cases**
  - **Stockpile anti-virals & PPE**
  - **Risk communication**

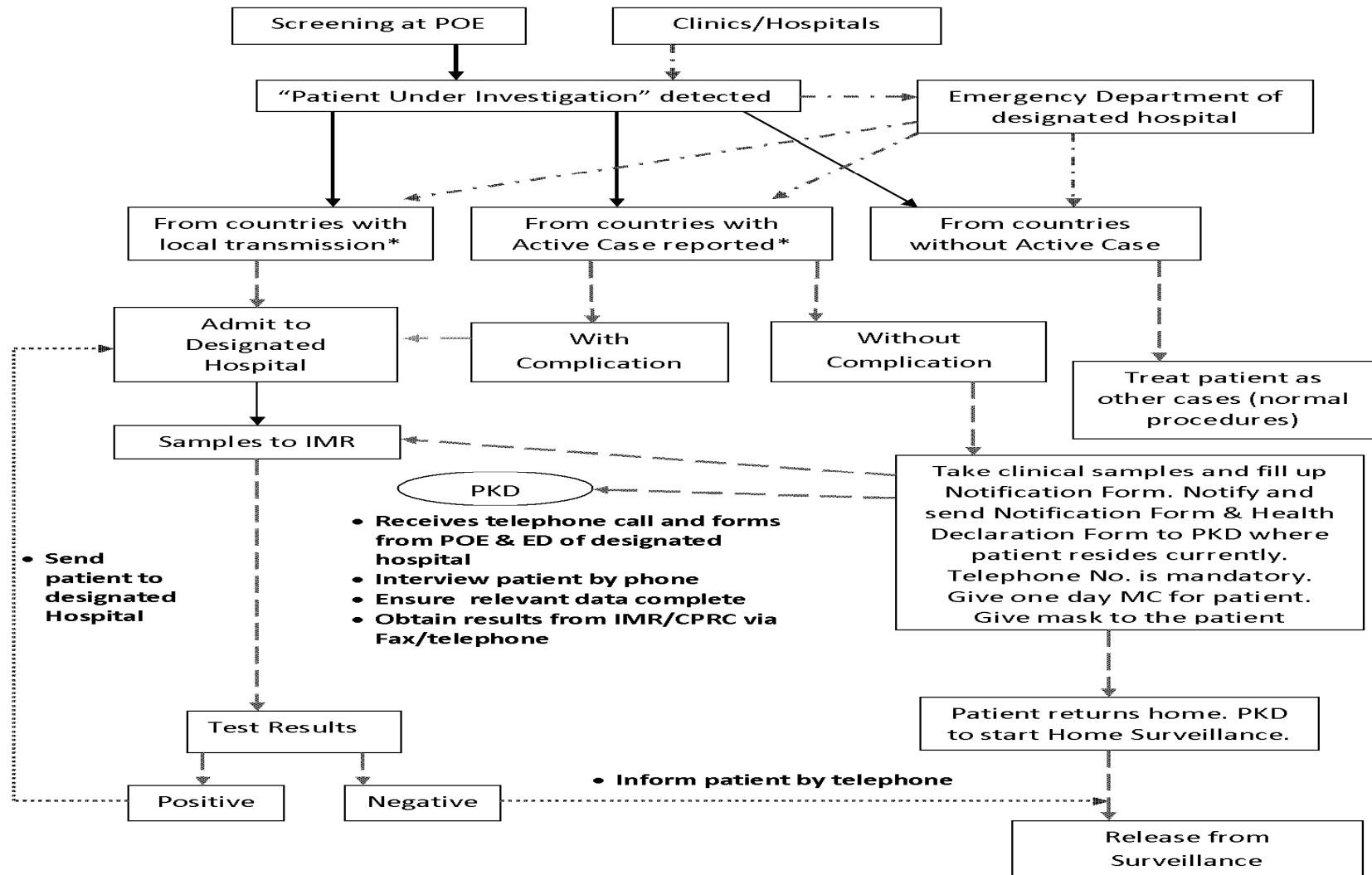


# New Screening Procedures

- ❑ **New screening procedures have been implemented since 9 June 2009**
- ❑ **Reasons:**
  - **Many affected countries currently with no local transmission & without active case reported**
  - **Severity of disease – mild in nature**
  - **Reduce burden at designated hospitals**
  - **Ease the burden of Patient Under Investigation**
  - **Reduce burden of personnel involved in the screening procedures**
  - **More effective preventive & control measures**



**Figure 2: Flowchart of screening for Patient Under Investigation**



\* The list of countries under the 3 grouping will be produced by CPRC



# Issues

- **Penalty – flight date/time change of for person under quarantine**
- **Flight manifest – soft copy vs hard copy**
- **Accommodation for person under quarantine – for foreigners**
- **Malaysian students in countries with local transmission come back for holidays**
- **SH seasonal influenza vaccine stock available = 106,565 doses. Need to be used soon**
- **Stockpile antiviral = 2 mil. stockpile PPE = 500,000 sets**
- **Senior Official Bilateral Meeting between Malaysia & Singapore on 18 June 2009**



# THANK YOU

